

SERIES

Light-Duty Industrial

Load Capacity: 100 to 200 lbs.

Quality Features

- FOUR-SIDED, DOUBLE BALL RACEWAY.**
 Hardened steel ball bearings touch upper and lower swivel raceway "on all four sides." This protects the pin from shock loading for free swiveling under heavy loads.
- HEAT-TREATED MOVING PARTS.**
 All moving parts are hardened to a precise molecular depth and Rockwell hardness. This extends caster life under rugged conditions and shock loads.
- RACEWAY DUST CAP.**
 Dust cap protects the raceway from contamination by dust, dirt, moisture, and other environmental debris. While standard on the 50 Series casters, these are usually not available on most competitive brands.
- THREAD GUARD.**
 Thread guards keep unwanted materials out of the wheel bearings thus increasing the life of the caster. Thread guards are standard on nearly all 50 Series wheels.

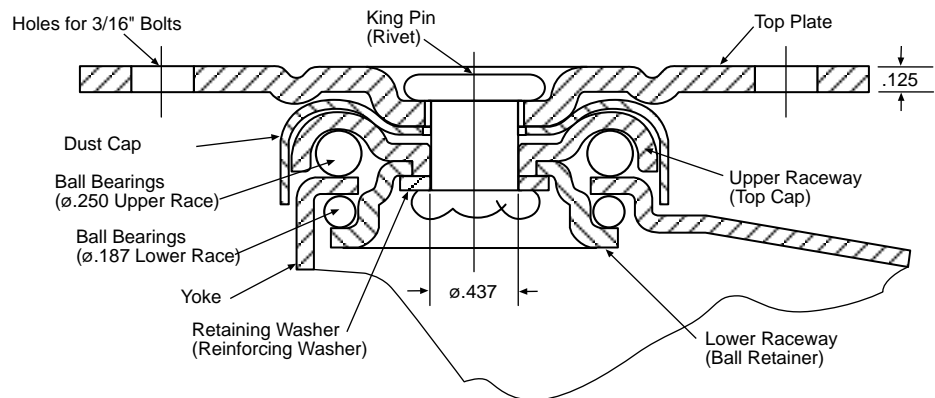


Options

- Maintenance Free Swivel Bearings
- High-Temperature Wheels (+550°F)
- Conductive Wheels
- Gray, Non-Marking Wheels
- Powder Coated Finishes

Acorn Industrial Products Co
 520 Hertzog Boulevard
 King of Prussia, PA 19406
 Phone 800-523-5474
 Fax 800-782-6780
 E-Mail
acorn@acornindprod.com
www.acornindprod.com

FOUR SIDED DOUBLE BALL BEARING RACEWAY 50 SERIES



Wheel Selection

NEOPRENE RUBBER



HI-CAP NEOPRENE



EXTRA-SOFT NEOPRENE

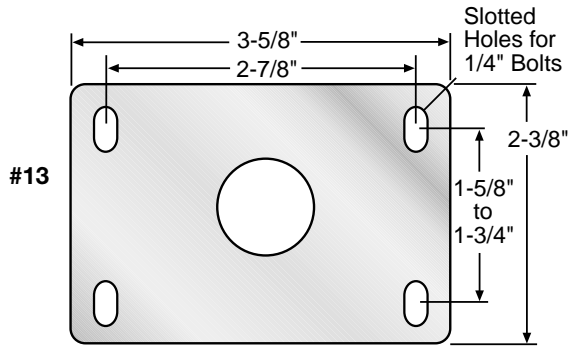


HARD RUBBER



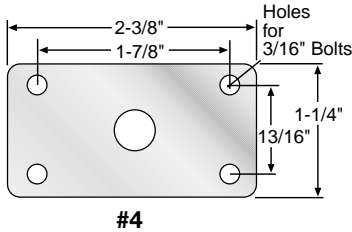
TOP PLATE

STANDARD

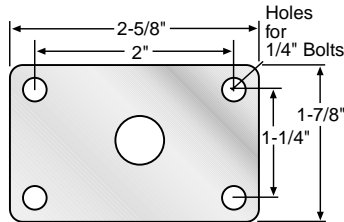


Acorn Industrial Products Co
 520 Hertzog Boulevard
 King of Prussia, PA 19406
 Phone 800-523-5474
 Fax 800-782-6780
 E-Mail acorn@acornindprod.com
www.acornindprod.com

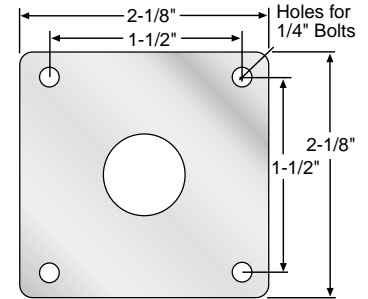
ALTERNATES



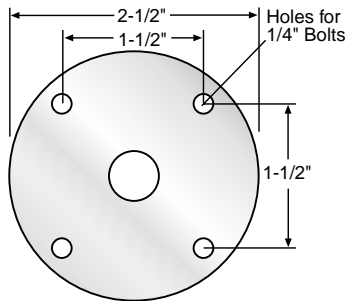
#4



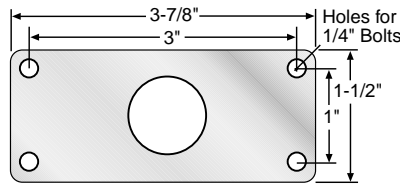
#5 (swivel only)



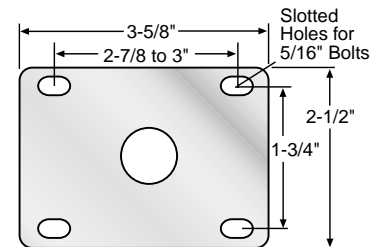
#7 (swivel only)



#8

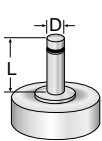


#10



#20

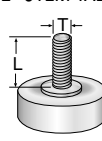
“O” STEM TABLE



Dimension D	Dimension L	Stem Number
3/8"	1"	O50-38-1
3/8"	1-1/4"	O50-38-114
7/16"	1"	O50-716-1
7/16"	1-1/4"	O50-716-114
7/16"	1-1/2"	O50-716-112

Other stem sizes and dimensions available.

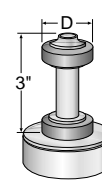
“L” STEM TABLE



Dimension T	Dimension L	Stem Number
3/8"-16	3/4"	L50-3816-34
3/8"-16	1"	L50-3816-1
3/8"-16	1-1/4"	L50-3816-114
7/16"-14	1"	L50-71614-1
7/16"-14	1-1/4"	L50-71614-114
1/2"-13	1-1/2"	L50-1213-112

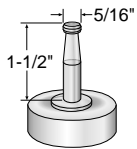
Other stem sizes and dimensions available.

“E” STEM TABLE



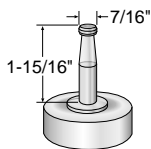
Dimension D	
ROUND	SQUARE
3/4"	3/4"
7/8"	7/8"
1"	1"
1-1/16"	1-1/8"
1-1/8"	1-1/4"
1-1/4"	1-3/8"
1-3/8"	1-1/2"
1-7/16"	1-5/8"
1-1/2"	1-3/4"
1-9/16"	2"
1-5/8"	
1-3/4"	
1-7/8"	
1.9"	

“S” stem
Special Order



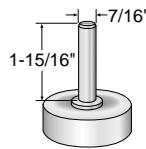
2" and 2-1/2" only

“K” stem

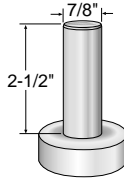


2" and 2-1/2" only

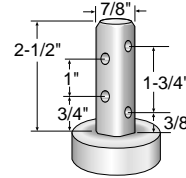
“BF” stem
Special Order



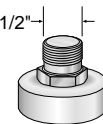
“7/8” round” stem



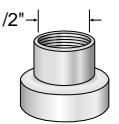
“7/8” square” stem



“LP” stem



“LPC” stem



POLYOLEFIN HUB

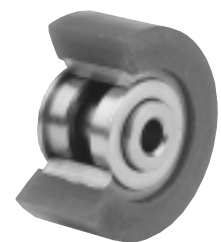
POLYOLEFIN

POLYURETHANE

THERMO PLASTIC RUBBER

CAST IRON HUB

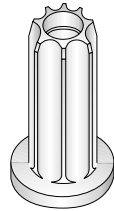
POLYURETHANE



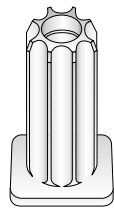
SERIES **continued**

SOCKETS

R-type – Round



R-type – Square



PLASTIC SOCKETS FOR "K" STEM CASTERS

Part Number	Tubing I.D. Round	Tubing I.D. Square	Socket Type
441413	5/8"	19/32"	Round
441414	xxx	5/8"	Square
441411	3/4"	23/32"	Round
441825	25/32"	47/64"	Round
441415	7/8"	27/32"	Round
441416	xxx	7/8"	Square
441409	15/16"	29/32"	Round
441406	1"	15/16"	Round
441826	xxx	1"	Square
441404	1-1/16"	1"	Round

Members of:



UNDERWRITERS
LABORATORY



INSTITUTE OF CASTER
MANUFACTURERS

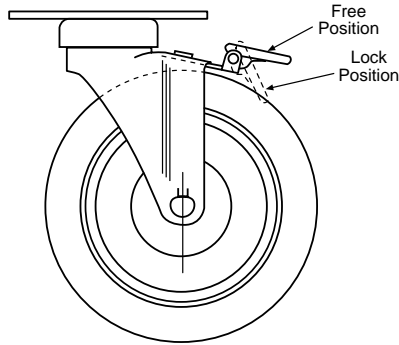


INDUSTRY MANUFACTURERS COUNCIL



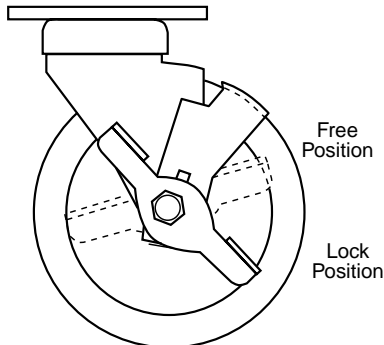
NATIONAL SANITATION
FOUNDATION

Wheel Lock Brake (WL)



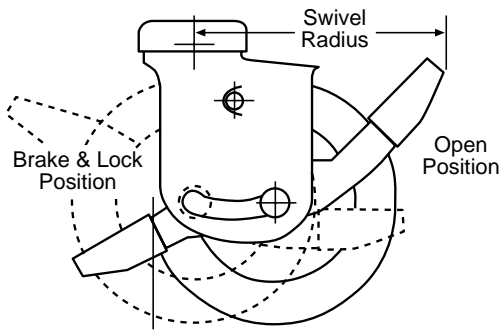
For 2", 2-1/2", 3", 4", and 5".

Radial Brake (RB)



For 3", 4" and 5" only.

Combination Swivel & Wheel Brake (CB)



For 3", 4" and 5" only.

Wheel Lock Brake

This simple, but effective nylon wheel lock is designed especially for light duty institutional market. (ie. hospitals, schools, offices, etc.) Most effective on casters with soft wheels. Requires only a slight pressure downward to engage the wheel lock and an equally slight pressure upwards to disengage it.

Radial Brake

Exceptional brake for light and medium duty applications, either industrial or institutional. Side pedal engages tread lock to restrain wheel movement. Brake kit available for field installation.

Combination Swivel & Wheel Brake

This foot lever operated combination swivel lock and wheel brake maintains the same height whether the brake is engaged or in the released position. Also, the same height is maintained when used with its companion casters as the swivel or rigid. For easy operation by simply stepping on the foot lever in the high position and reversing the action to release the brake to a free rolling position.

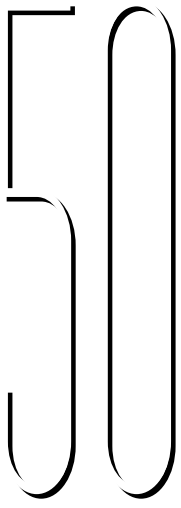
Light-Duty Industrial



Diameter	Tread Width	Load Capacity	Wheel Material	Bearing	Swivel Part Number	Rigid Part Number	Approx. Weight	Overall Height	Swivel Radius
2	1	100	NEOPRENE RUBBER	ACETAL	52-13-PDN	52-13-PRDN	1	2-7/8	1-13/16
				BALL	52-13-XDN	52-13-XRDN			
			HI-CAP NEOPRENE	ACETAL	52-13-PKN	52-13-PRKN			
				BALL	52-13-XKN	52-13-XRKN			
			ROUND DONUT / NEOPRENE	ACETAL	52-13-PDN-RD	52-13-PRDN-RD			
				ACETAL	52-13-PH	52-13-PRH			
		150	HARD RUBBER	ACETAL	52-13-PH-RD	52-13-PRH-RD			
				BALL	52-13-XH	52-13-XRH			
			HI-CAP NEOPRENE	ACETAL	52-13-PKN-RD	52-13-PRKN-RD			
				ACETAL	52-13-PH	52-13-PRH			
			CAST IRON	PLAIN	52-13-BCI	52-13-BRCI			
				POLYOLEFIN	PLAIN	52-13-BPO	52-13-BRPO		
200	POLYURETHANE / STEEL HUB	BALL	52-13-XADI-M-CI	52-13-XRADI-M-CI					
		DELIRIN	52-13-DADI-M-CI	52-13-DRADI-M-CI					

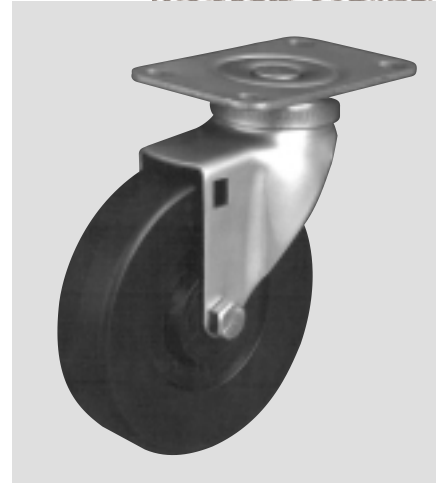
50 Series

Diameter	Tread Width	Load Capacity	Wheel Material	Bearing	Swivel Part Number	Rigid Part Number	Approx. Weight	Overall Height	Swivel Radius
2 1/2	1	110	NEOPRENE RUBBER	ACETAL	52 1/2-13-PDN	52 1/2-13-PRDN	1-1/8	3-5/8	2
				BALL	52 1/2-13-XDN	52 1/2-13-XRDN			
		140	HI-CAP NEOPRENE	ACETAL	52 1/2-13-PKN	52 1/2-13-PRKN			
				BALL	52 1/2-13-XKN	52 1/2-13-XRKN			
		165	CAST IRON	PLAIN	52 1/2-13-BCI	52 1/2-13-BRCI	1-11/16		
				HARD RUBBER	ACETAL	52 1/2-13-PH	52 1/2-13-PRH		
BALL	52 1/2-13-XH	52 1/2-13-XRH							
3	15/16	110	EXTRA SOFT NEOPRENE	ACETAL	53-13-PEZN-RD	53-13-PREZN-RD	1-3/16	4-1/8	2-7/8
				BALL	53-13-XEZN-RD	53-13-XREZN-RD			
		125	ROUND DONUT / NEOPRENE	ACETAL	53-13-PDN-RD	53-13-PRDN-RD			
				BALL	53-13-XDN-RD	53-13-XRDN-RD			
		165	HARD RUBBER	ACETAL	53-13-PH-RD	53-13-PRH-RD			
				BALL	53-13-XH-RD	53-13-XRH-RD			
	7/8	120	NEOPRENE RUBBER	ACETAL	53-13-PDN	53-13-PRDN			
				BALL	53-13-XDN	53-13-XRDN			
		135	HI-CAP NEOPRENE	ACETAL	53-13-PKN	53-13-PRKN			
				BALL	53-13-XKN	53-13-XRKN			
		165	HARD RUBBER	ACETAL	53-13-PH	53-13-PRH			
				BALL	53-13-XH	53-13-XRH			
		185	POLYOLEFIN	PLAIN	53-13-BPO	53-13-BRPO			
	200			CAST IRON	PLAIN	53-13-BCI	53-13-BRCI		
		1	100		EXTRA SOFT THERMO-PLASTIC RUBBER	BALL	53-13-XPD-M-PO-55		
PLAIN	53-13-BPD-M-PO-55			53-13-BRPD-M-PO-55					
150	THERMO-PLASTIC RUBBER		BALL	53-13-XPD-M-PO	53-13-XRPD-M-PO				
			PLAIN	53-13-BPD-M-PO	53-13-BRPD-M-PO				
200	POLYURETHANE / POLYOLEFIN HUB	BALL	53-13-XADI-M-PO	53-13-XRADI-M-PO					
		PLAIN	53-13-BADI-M-PO	53-13-BRADI-M-PO					
4	15/16	110	EXTRA SOFT NEOPRENE	ACETAL	54-13-PEZN-RD	54-13-PREZN-RD	1-9/16	5-1/8	3-3/8
				BALL	54-13-XEZN-RD	54-13-XREZN-RD			
		125	ROUND DONUT / NEOPRENE	ACETAL	54-13-PDN-RD	54-13-PRDN-RD			
				BALL	54-13-XDN-RD	54-13-XRDN-RD			
		185	HARD RUBBER	ACETAL	54-13-PH-RD	54-13-PRH-RD			
				BALL	54-13-XH-RD	54-13-XRH-RD			
	7/8	120	NEOPRENE RUBBER	ACETAL	54-13-PDN	54-13-PRDN			
				BALL	54-13-XDN	54-13-XRDN			
		135	HI-CAP NEOPRENE	ACETAL	54-13-PKN	54-13-PRKN			
				BALL	54-13-XKN	54-13-XRKN			
		185	HARD RUBBER	ACETAL	54-13-PH	54-13-PRH			
				BALL	54-13-XH	54-13-XRH			
		200	POLYOLEFIN	PLAIN	54-13-BPO	54-13-BRPO			
	200			CAST IRON	PLAIN	54-13-BCI	54-13-BRCI		
		1	110		EXTRA SOFT THERMO-PLASTIC RUBBER	BALL	54-13-XPD-M-PO-55		
PLAIN	54-13-BPD-M-PO-55			54-13-BRPD-M-PO-55					
160	THERMO-PLASTIC RUBBER		BALL	54-13-XPD-M-PO	54-13-XRPD-M-PO				
			PLAIN	54-13-BPD-M-PO	54-13-BRPD-M-PO				
200	POLYURETHANE / POLYOLEFIN HUB	BALL	54-13-XADI-M-PO	54-13-XRADI-M-PO					
		PLAIN	54-13-BADI-M-PO	54-13-BRADI-M-PO					
5	15/16	110	EXTRA SOFT NEOPRENE	ACETAL	55-13-PEZN-RD	55-13-PREZN-RD	2	6-1/8	3-7/8
				BALL	55-13-XEZN-RD	55-13-XREZN-RD			
		125	ROUND DONUT / NEOPRENE	ACETAL	55-13-PDN-RD	55-13-PRDN-RD			
				BALL	55-13-XDN-RD	55-13-XRDN-RD			
		185	HARD RUBBER	ACETAL	55-13-PH-RD	55-13-PRH-RD			
				BALL	55-13-XH-RD	55-13-XRH-RD			
	7/8	120	NEOPRENE RUBBER	ACETAL	55-13-PDN	55-13-PRDN			
				BALL	55-13-XDN	55-13-XRDN			
		135	HI-CAP NEOPRENE	ACETAL	55-13-PKN	55-13-PRKN			
				BALL	55-13-XKN	55-13-XRKN			
		165	HARD RUBBER	ACETAL	55-13-PH	55-13-PRH			
				BALL	55-13-XH	55-13-XRH			
		185	POLYOLEFIN	PLAIN	55-13-BPO	55-13-BRPO			
	200			CAST IRON	PLAIN	55-13-BCI	55-13-BRCI		
		1	120		EXTRA SOFT THERMO-PLASTIC RUBBER	BALL	55-13-XPD-M-PO-55		
PLAIN	55-13-BPD-M-PO-55			55-13-BRPD-M-PO-55					
170	THERMO-PLASTIC RUBBER		BALL	55-13-XPD-M-PO	55-13-XRPD-M-PO				
			PLAIN	55-13-BPD-M-PO	55-13-BRPD-M-PO				
200	POLYURETHANE / POLYOLEFIN HUB	BALL	55-13-XADI-M-PO	55-13-XRADI-M-PO					
		PLAIN	55-13-BADI-M-PO	55-13-BRADI-M-PO					



SERIES

Stainless Steel



Diameter	Tread Width	Load Capacity	Wheel Material	Bearing	Swivel Part Number	Rigid Part Number	Approx. Weight	Overall Height	Swivel Radius
3	7/8	120	NEOPRENE RUBBER	ACETAL	53-13-PDN-SS	53-13-PRDN-SS	1-3/16	4-1/8	2-7/8
		135	HI-CAP NEOPRENE	ACETAL	53-13-PKN-SS	53-13-PRKN-SS			
		165	HARD RUBBER	ACETAL	53-13-PH-SS	53-13-PRH-SS			
		200	STAINLESS STEEL	PLAIN	53-13-BSS-SS	53-13-BRSS-SS	3-1/2		
	15/16	110	EXTRA SOFT NEOPRENE	ACETAL	53-13-PEZN-RD-SS	53-13-PREZN-RD-SS	1-3/16		
		125	ROUND DONUT / NEOPRENE	ACETAL	53-13-PDN-RD-SS	53-13-PRDN-RD-SS	1-3/16		
	1	100	EXTRA SOFT THERMO-PLASTIC RUBBER	PLAIN	53-13-BPD-M-P0-55-SS	53-13-BRPD-M-P0-55-SS	1-1/4		
			150	THERMO-PLASTIC RUBBER	PLAIN	53-13-BPD-M-P0-SS			
		185	POLYOLEFIN	PLAIN	53-13-BPO-SS	53-13-BRPO-SS	1-3/16		
			200	POLYURETHANE / POLYOLEFIN HUB	PLAIN	53-13-BADI-M-P0-SS	53-13-BRADI-M-P0-SS		
4	7/8	120	NEOPRENE RUBBER	ACETAL	54-13-PDN-SS	54-13-PRDN-SS	1-3/4	5-1/8	3-3/8
		165	HARD RUBBER	ACETAL	54-13-PH-SS	54-13-PRH-SS			
		185	POLYOLEFIN	PLAIN	54-13-BPO-SS	54-13-BRPO-SS			
		200	STAINLESS STEEL	PLAIN	54-13-BSS-SS	54-13-BRSS-SS	5-1/2		
	15/16	125	ROUND DONUT / NEOPRENE	ACETAL	54-13-PDN-RD-SS	54-13-PRDN-RD-SS	1-3/4		
		1	110	EXTRA SOFT THERMO-PLASTIC RUBBER	PLAIN	54-13-BPD-M-P0-55-SS	54-13-BRPD-M-P0-55-SS		
	160		THERMO-PLASTIC RUBBER	PLAIN	54-13-BPD-M-P0-SS	54-13-BRPD-M-P0-SS			
	200		POLYURETHANE / POLYOLEFIN HUB	PLAIN	54-13-BADI-M-P0-SS	54-13-BRADI-M-P0-SS			
	120		NEOPRENE RUBBER	ACETAL	55-13-PDN-SS	55-13-PRDN-SS	2		
	7/8	165	HARD RUBBER	ACETAL	55-13-PH-SS	55-13-PRH-SS			
185		POLYOLEFIN	PLAIN	55-13-BPO-SS	55-13-BRPO-SS				
200		STAINLESS STEEL	PLAIN	55-13-BSS-SS	55-13-BRSS-SS	8-1/4			
5	15/16	125	ROUND DONUT / NEOPRENE	ACETAL	55-13-PDN-RD-SS	55-13-PRDN-RD-SS	2	6-1/8	3-7/8
		1	120	EXTRA SOFT THERMO-PLASTIC RUBBER	PLAIN	55-13-BPD-M-P0-55-SS	55-13-BRPD-M-P0-55-SS	1-3/4	
	170		THERMO-PLASTIC RUBBER	PLAIN	55-13-BPD-M-P0-SS	55-13-BRPD-M-P0-SS			
	200		POLYURETHANE / POLYOLEFIN HUB	PLAIN	55-13-BADI-M-P0-SS	55-13-BRADI-M-P0-SS			
	120		NEOPRENE RUBBER	ACETAL	55-13-PDN-SS	55-13-PRDN-SS	2		
	7/8	165	HARD RUBBER	ACETAL	55-13-PH-SS	55-13-PRH-SS			
185		POLYOLEFIN	PLAIN	55-13-BPO-SS	55-13-BRPO-SS				

Designed to provide the ultimate
CORROSION PROTECTION

These casters are ideally suited for acetic, nitric and citric acid environments in addition to being well suited for organic and inorganic chemicals, dye stuffs, crude and refined oil environments. Widely accepted in the following industries:

- **DAIRY**
- **FOOD PROCESSING**
- **HOSPITALS & MEDICAL**
- **BEVERAGE**
- **PHARMACEUTICALS**
- **ANIMAL CAGES**

Made with non-magnetic, 303/304 stainless steel.